



All for One One for All

2Wire Intelligent Gateways

Provide subscribers with a superior customer experience while dramatically reducing operating costs with high-performance, future-proof customer premise equipment.

Visit us on the Web at 2Wire.com for a complete catalog of our products, applications, and services.

Two Intelligent Gateways; One Great Solution

Both carrier grade, TR-069 compliant products include a built-in Stateful Packet Inspection firewall, advanced DSL modem; Both are enhanced-services-ready and remotely manageable. The wired solution offers subscribers hassle-free, secure broadband connectivity and local networking. The wireless solution extends flexibility with a HyperG™ 802.11g wireless access point for superior power and range.

Ready, Set, Go.

Greenlight™ CD-less DSL installation is the revolutionary answer to eliminating costs and calls. Users order DSL, plug in their gateway, and are instantly able to start surfing the Internet. Greenlight takes the work out of manual provisioning and reduces installation support calls.

A Healthy Diagnosis

Gateway proactive self-diagnostics, integrated PC support tools, and automated bulletins work together to identify problems, and provide users with self help.

The Right Data, Right Now

2Wire® puts the power in your hands. With rich remote management for every device, 2Wire's standards based Component Management System (CMS) provides the tools to pinpoint problems quickly. Whether assessing a single user or multi-user gateway, call center staff are better equipped to provide first call resolutions. One system provides valuable tools for managing all of your deployed CPE. Collect data and analyze statistics to enable targeting marketing programs and proactive diagnostics.

To Infinity & Beyond

2Wire's intelligent gateways are upgradeable for the revenue generating services available today, and those of tomorrow. Gateways are all VoIP ready, and include churn-reducing data applications. Providers will never have to replace CPE again. Perform firmware updates for an entire population or specific service group. Best-in-industry QoS and management technology allow carriers to activate, provision, and manage differentiated services from a centralized location.





Models

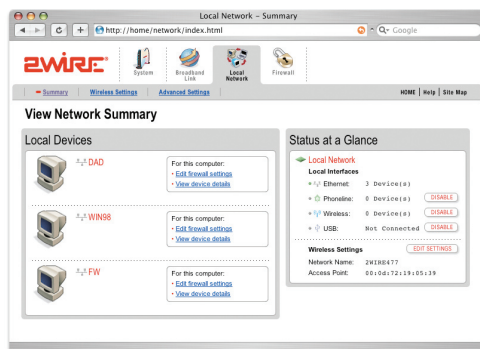
Model Number	Broadband Interface	HPNA Enabled	Ethernet Ports	Wireless Enabled	Form Factor
1070	ADSL†	No	1	None	A
1000HG	ADSL†	Yes	1	HyperG	B
1700SG	ADSL†	No	4	802.11g	B
1700HG	ADSL†	No	4	HyperG	B
1800HG	ADSL†	Yes	4	HyperG	B
170HG	Ethernet	No	4	HyperG	B
180HG	Ethernet	Yes	4	HyperG	B

All models include a single USB port. HyperG and 802.11g are 802.11b compatible.
 † ADSL 2 ready. Annex A standard, Annex B available, contact your 2Wire sales representative for more information.

Form Factor A: 6in x 7in x 2.25in (15.2cm x 17.8cm x 5.7cm) .8lbs (.36Kg)
 Form Factor B: 10in x 8in x 2in (25.5cm x 20.4cm x 5.1cm) 1.4lbs (.64Kg)

Browser Interface

We take the work out of managing a local network. Users see important information about the DSL connection, the devices on the network, firewall logs, and more. Optional notification features let users know if there is a problem and guides them to a fix.



Technical Specifications

Hardware Features

- WAN: ADSL, RJ-11 (on line 1 & 2*)
- LAN: HyperG 802.11g wireless†, 1-port or 4-port 10/100BaseT Ethernet Switch†, Phoneline HomePNA 2.0†, USB 1.1/1.0

Broadband Protocols

- PPPoE, PPPoA, RFC2684, DHCP client, Multi-IP support, Transparent Bridging
- ATM Adaptation Layer 2 & 5 supporting up to 10 Permanent Virtual Circuits (PVCs)

Routing Functions

- Network Address Translation, Network Port Translation (NAT/PAT)
- DHCP server, DNS Proxy, VPN pass-thru, Static Routes
- Configurable Stateful Packet Inspection firewall with application list and ALG support

Wireless

- Wi-Fi Protected Access (WPA-PSK)
- 64-bit / 128-bit WEP
- Receive Sensitivity: 802.11b CCK = -90 dBm, 802.11g OFDM = -77dBm
- Transmit Power (max): 802.11b CCK = 26dBm, 802.11g OFDM = 26dBm

Management

- Web User Interface
- Software upgradeable via local and remote management
- OGMP/XML management support via 2Wire Component Management System (CMS)
- Service Provider enhanced services activation via 2Wire CMS

† Configuration varies by model.
 *Not available on 1070 model.

Applications Available on 2Wire Intelligent Gateways

Gateway based applications deliver whole-home support. Offer enhanced services to all subscribers increasing revenue per subscriber and extending the customer life cycle.

Home Networking

The easiest way to setup a high-speed network. Unparalleled flexibility with support for wireless, Ethernet, HomePNA, and USB. Share files, printers and a broadband connection with every computer in the home or small office.

Parental Controls: Content Screening & Internet Access Controls

Content Screening protects your kids from Websites with questionable content. Block or allow categories, and control access to specific URLs. Internet Access Control gives you power to decide when your child can use the Internet and allows you to restrict Internet access by day of week and time of day.

Firewall Monitor

2Wire's Firewall Monitor continuously assesses threats to the local network, while automatically keeping itself current with software updates. Customers determine when to receive notification of attacks and view detailed logs through the gateway user interface.

Web Remote Access

Have fast, easy access to your home network remotely with a standard Web browser. Download files from your home computers securely from anywhere. All you need is an Internet connection and your network password. Create your own unique domain name to easily remember how to access your network. Share the domain name with family and friends so they can access files like photos that you place in special shared folders.

Features and specifications are subject to change. © 2004 2Wire, Inc. 2Wire, the 2Wire logo design, and HomePortal are registered trademarks of 2Wire, Inc. OfficePortal, MediaPortal, HyperG and Greenlight are trademarks of 2Wire, Inc. All rights reserved. Patent Pending. 5100-000296-001 Rev A 12/04

